

CHOOSING A PLASTIMO LIFERAFT

Choosing a liferaft should be a matter of informed choice rather than merely complying with a regulation. This is what to look for :

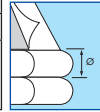
- **Very large opening** to facilitate access directly from the boat.

- **Materials/buoyancy tubes : the double chamber is a Plastimo exclusivity** (air chamber within an envelope), used on all our liferaft models. Plastimo has selected a 1100 Decitex PVC for the outer envelope because it offers extreme resistance to abrasion. The inner chamber is constructed from an outstanding polyurethane sheet which guarantees an absolute water and airtightness, and offers an astonishing stretching capacity of 500%.



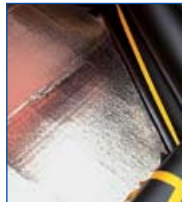
- **Buoyancy tube diameter**
Upper and lower tubes are totally independent on all Plastimo liferafts.

Liferaft	4-man	6-man	8-man	10-man	12-man
Cruiser	2 x Ø 21 cm	2 x Ø 24 cm	2 x Ø 26 cm	-	-
Coastal ISO	2 x Ø 21 cm	2 x Ø 23 cm	-	-	-
Offshore	2 x Ø 21 cm	2 x Ø 24 cm	2 x Ø 26 cm	2 x Ø 28 cm	-
Transocean ISO-ISAF, Capri, Ibiza	2 x Ø 21 cm	2 x Ø 23 cm	2 x Ø 26 cm	2 x Ø 28 cm	2 x Ø 29 cm



- **Double floor**
Aluminium coated insulating foam.

Cruiser std, Coastal ISO	Single floor
Offshore, Cruiser ORC, Capri, Ibiza, Transocean ISO-ISAF	Double floor only



- **Floating anchor**

Liferaft	Anchor size	Anchor line
Cruiser	1 x 0.40 m ²	10 m
Coastal ISO	1 x 0.67 m ²	30 m
Offshore	1 x 0.60 m ²	30 m
Capri	1 x 0.60 m ²	30 m
Ibiza	2 x 0.12 m ² SOLAS	30 m
Transocean ISO-ISAF	1 x 0.67 m ²	30 m



- **Patented* firing head**
Developed by Plastimo engineers and used on all our liferaft models, this firing head is actuated by hand (10 %) and by gas pressure (90 %) ; even a child or an injured person can blow a liferaft open.

*Patents no. 89 4029 15.5 and 88 14 054.



- **Inflation temperature range**

Although not visible, this criterion is essential : passage-makers and round the world racers must pay a particular attention to selecting the right liferaft, with a firing system and bottle capacity that is designed to perform at best in the specific geographic areas where they sail.

Liferaft	Inflation temperature range	
	0° to +65°C	-15°C to +65°C
Cruiser, Offshore & Coastal ISO	✓	-
Capri, Ibiza & Transocean ISO-ISAF	✓	✓

- **Lighting**
Lithium-powered light on the top of the canopy.
Duration : about 12 hours.



Liferaft	Lighting
Cruiser	-
Coastal ISO	0.75 cd. Automatic activation when liferaft is blown open, then manual activation
Offshore	0.75 cd. Manual activation
Capri & Ibiza Transocean ISO-ISAF	4.3 cd - SOLAS. Automatic activation when liferaft is blown open ; then manual activation (0.75 cd inside light on Capri & Ibiza only)

- **Tent visibility : colour and signalling means**

Liferaft	Colour of tent	Retro-reflecting stripes	Radar-reflecting stripes
Cruiser	orange	300 cm ²	-
Coastal ISO & Offshore	fluo orange	900 cm ² tent + 600 cm ² bottom	-
Ibiza	fluo orange	900 cm ² tent + 600 cm ² bottom	7300 cm ²
Capri & Transocean ISO-ISAF	fluo orange	900 cm ² tent + 600 cm ² bottom	7300 cm ² *

*except on 12-man model

- **Arch tube**

Cruiser	Automatic inflation, simultaneously with tubes
Coastal ISO	Fibreglass rod supports canopy, manual set-up
Offshore	Automatic inflation, simultaneously with tubes
Capri & Ibiza Transocean ISO-ISAF	Automatic inflation, simultaneously with tubes. An anti-return valve guarantees sufficient buoyancy in the arch tube, in case a puncture would occur in the upper tube.



- **Boarding**

Cruiser	1 outside rope ladder + 1 inside webbing ladder
Coastal ISO	1 webbing reversible ladder + inside grab handle
Offshore	2 webbing ladders
Capri & Ibiza Transocean ISO	1 webbing reversible ladder, weighted, + inside grab handle (2 ladders on 10-man raft)
Transocean ISAF	1 boarding ramp + inside grab handle (1 boarding ramp + 1 ladder on 10 & 12-man models)

- **Ballast pockets**

Liferaft	4-man	6-man	8-man	10-man	12-man	Capacity per pocket
	Number of ballast pockets					
Cruiser	3	3	4	-	-	30 liters
Coastal ISO	4	4	4	4	-	55 liters
Offshore	4	4	5	6	-	42 liters
Capri, Ibiza, Transocean ISO-ISAF	4	4	4	5	6	55 liters